



SWISSPEARL ARCHITECTURE 2

International High Profile Buildings

SWISSPEARL

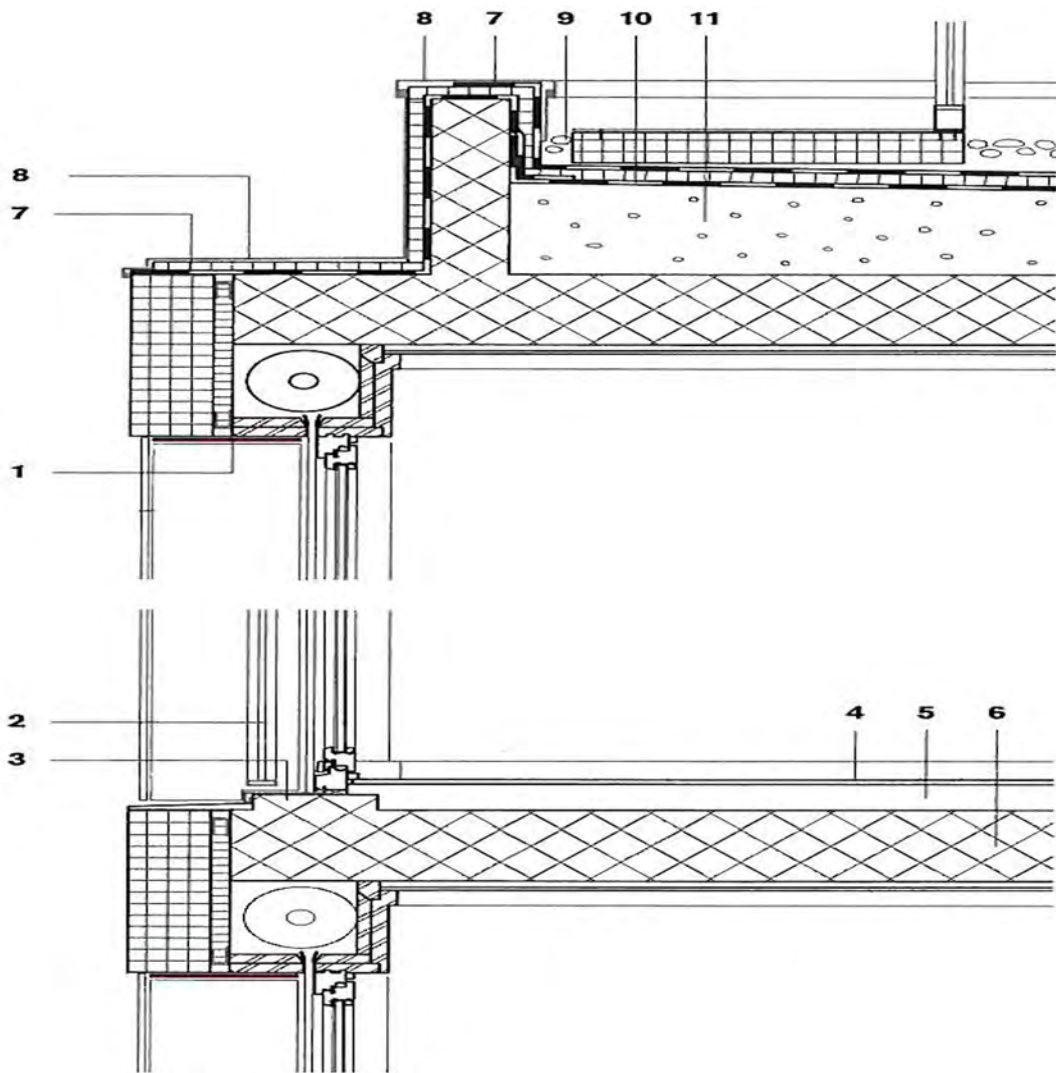
The Oriente building complex, which comprises a number of mainly co-operative apartments, an office building and an intermediate plaza, also accommodates some public functions. Thus the square represents a strolling area for the surrounding neighbourhood or – with a number of different restaurants and cafés – a meeting point.

Oriente housing and office development
Lisbon, Portugal

MATERIAL COLLAGES





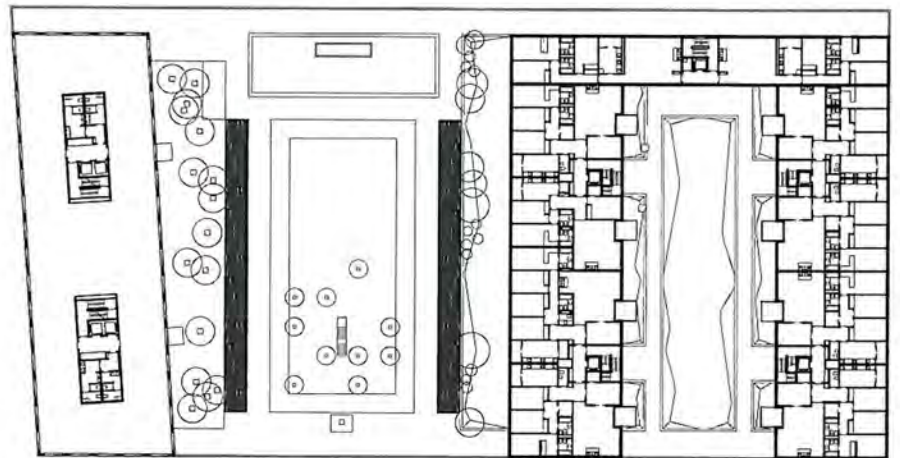


- 1 Swisspearl® panel
- 2 Steel rail
- 3 Concret sill
- 4 Wood floor
- 5 Cork grit
- 6 Concrete
- 7 Asphaltic screen
- 8 Zinc sheet
- 9 Stone pebbles
- 10 Geotextile membrane
- 11 Screed laid to fall

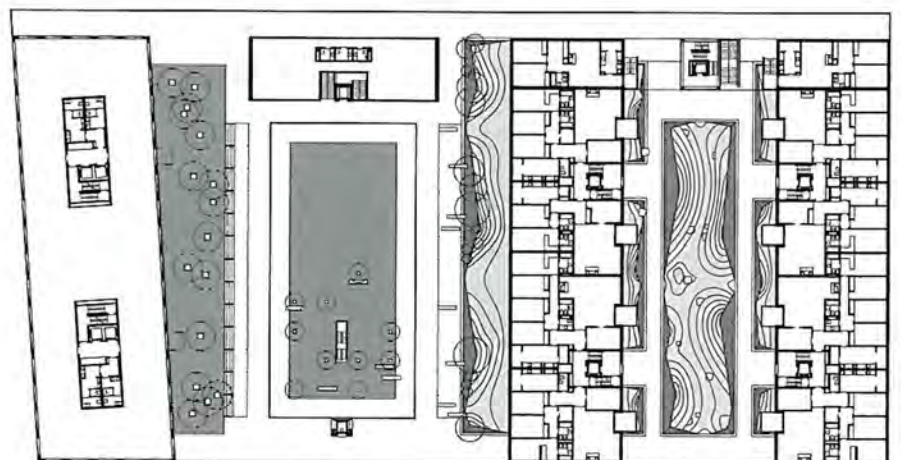
Vertical section 1:20



**A MASTERLY COMBINATION OF FIBRE
CEMENT PANELS WITH SOME
VERY DISSIMILAR BUILDING MATERIALS.**



First floor 1:1000



Ground floor 1:1000

Location Parque das Nações, Lisbon, Portugal

Client Cooiciclo, Lisbon

Architects Promontório Arquitectos, Lisbon; João Perloiro,
João Luís Ferreira, Paulo Perloiro, Paulo Martins Barata,
Pedro Appleton

Planning and construction period 1996–2003

Façade material Swisspearl® Carat Anthracite 7020

