

arquitétici

prémio architekti / arkial 1999

Edifícios de Habitação Coociclo, 1994-97

Paulo Martins Barata

João Luís Ferreira, Promontório Arquitectos



Dois edifícios de habitação em Telheiras do 1º lugar num concurso por convites promovido por uma cooperativa de habitação sob uma volumetria pré-definida.

Em resposta às escolhas individuais dos cooperantes, cada edifício combina 8 tipologias diferentes em simplex e duplex. A fachada, inicialmente concebida num esquema de varandas-pátio de duplo pé-direito para as tipologias duplex, densifica-se pela sobreposição de um sistema híbrido de janelas singulares dispersas; a esta aparente alietoriedade fazem-se corresponder os requisitos funcionais de cada piso.

Em 13 andares e 48 apartamentos, a complexidade compositiva do conjunto é formalmente sistematizada pela representação das lages e pela ostensiva monotonia dos materiais - eternit cinzento, betão aparente e alumínio natural - num contraste decisivo com a vulgaridade multi-color da envolvente.

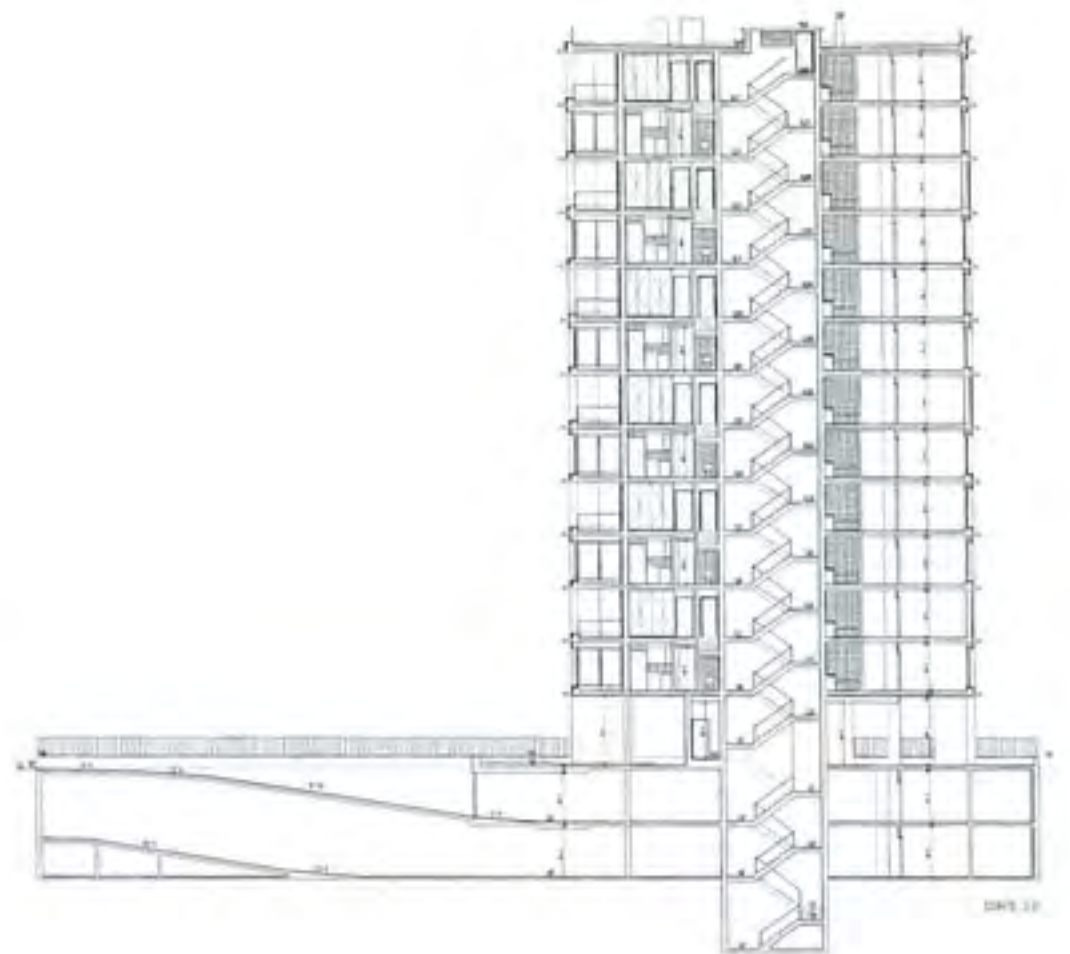
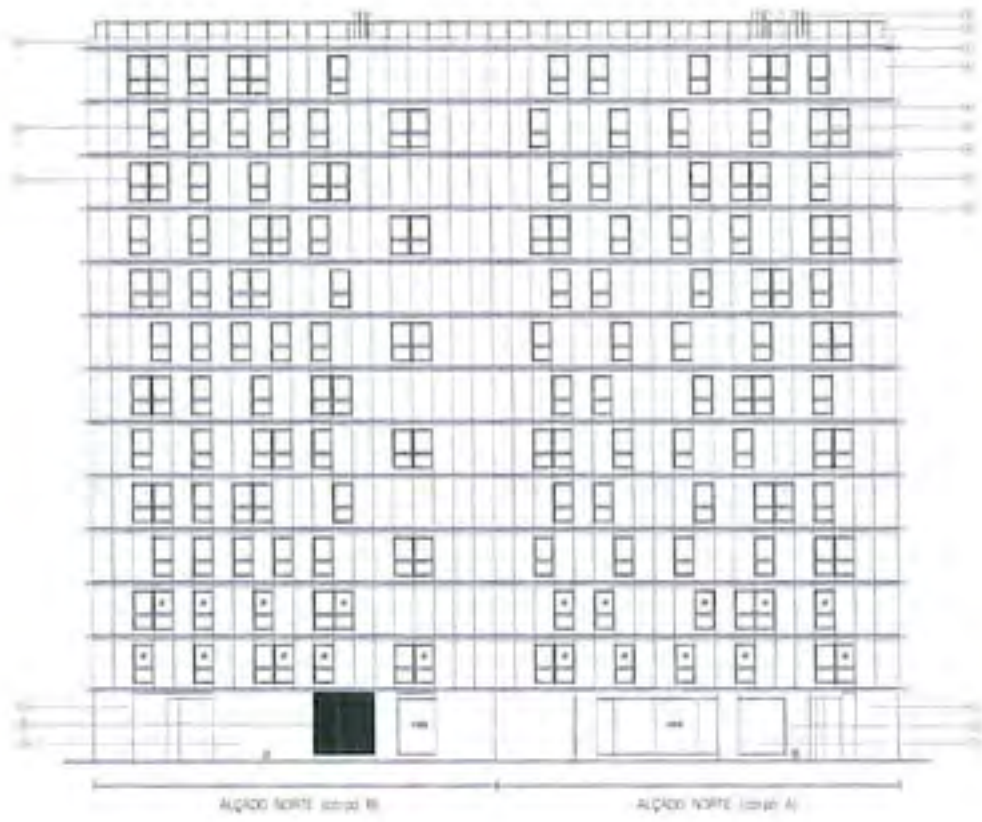
Em última análise os edifícios encerram as expectativas do nostálgico paradigma burguês da moradia urbana na irreconciliável cultura metropolitana de congestão.

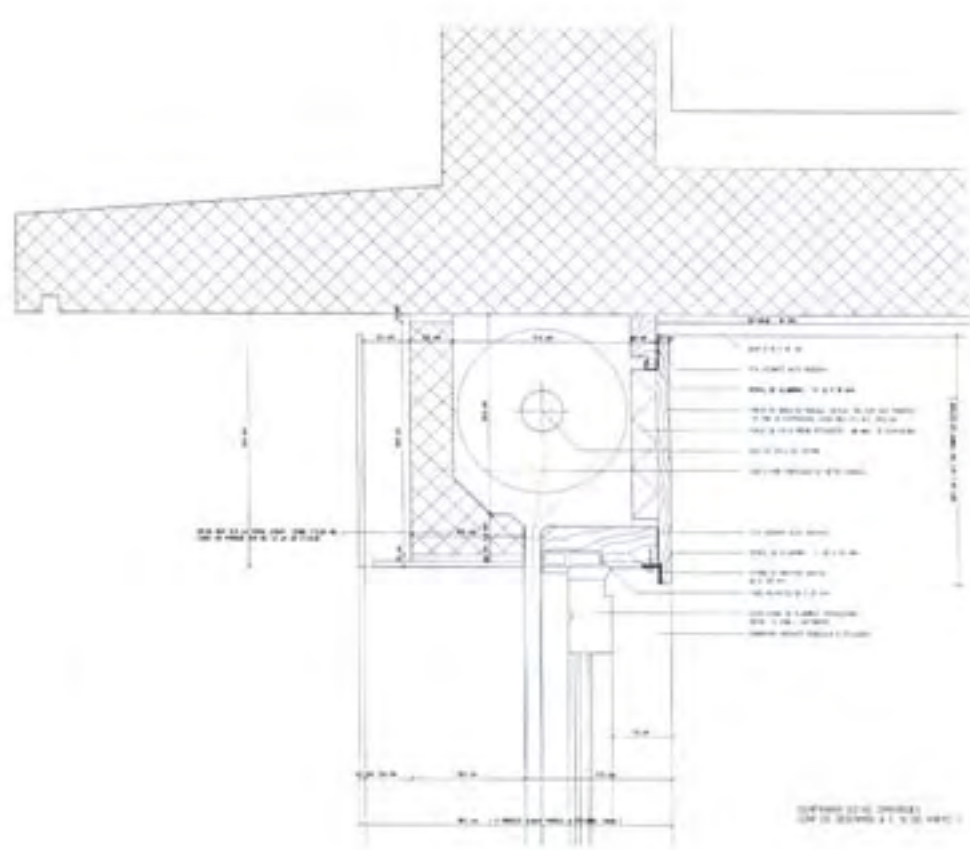
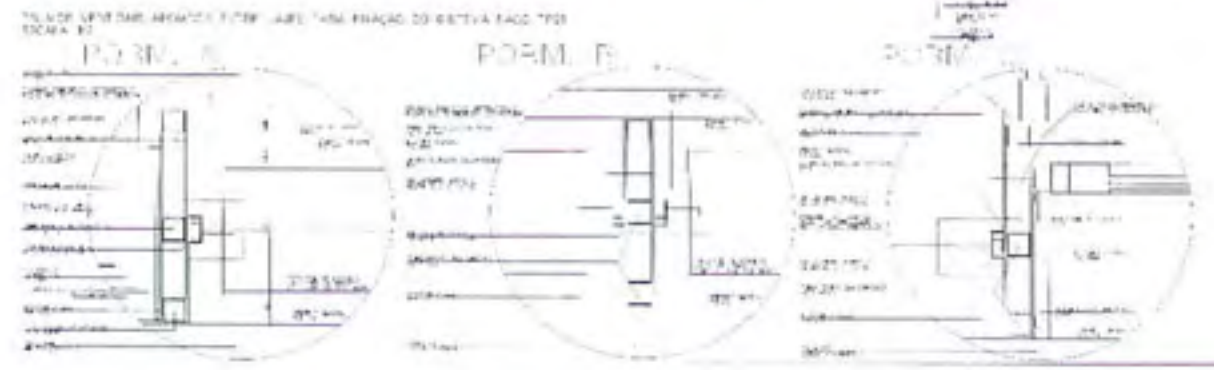
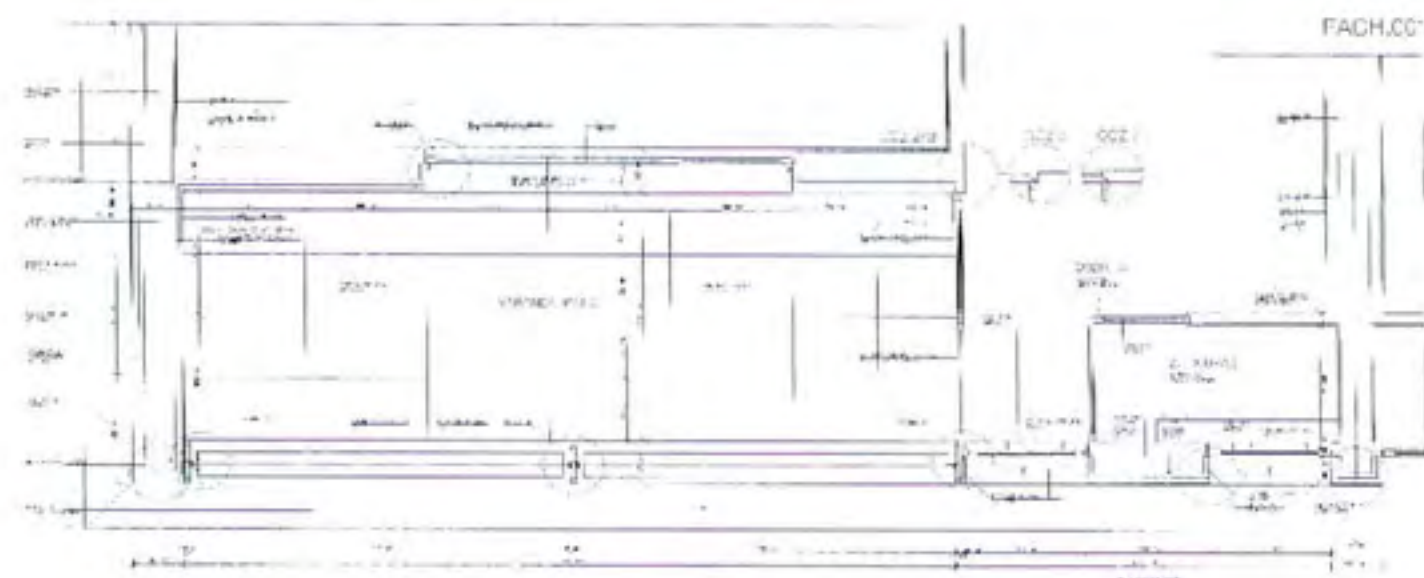
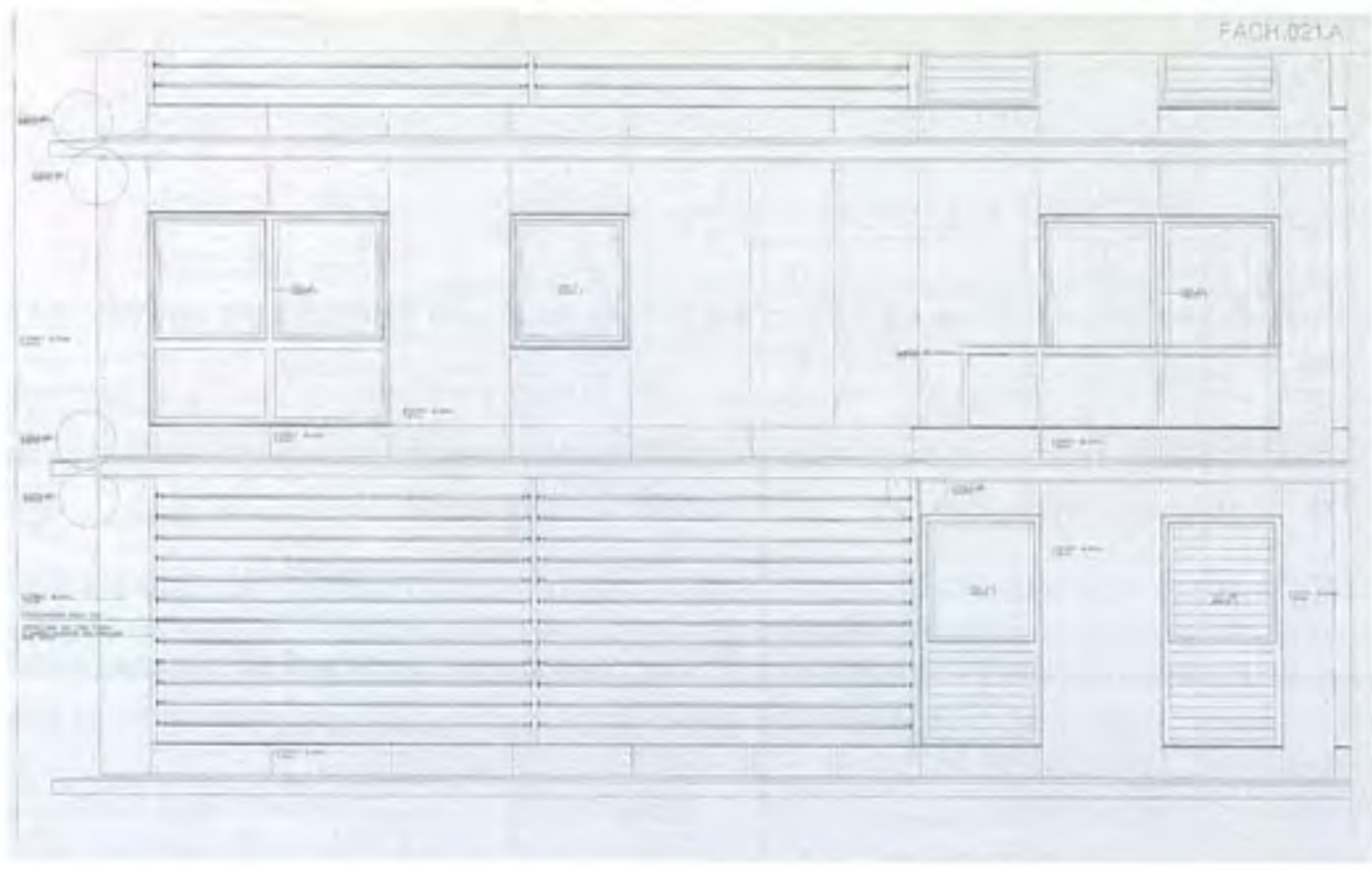
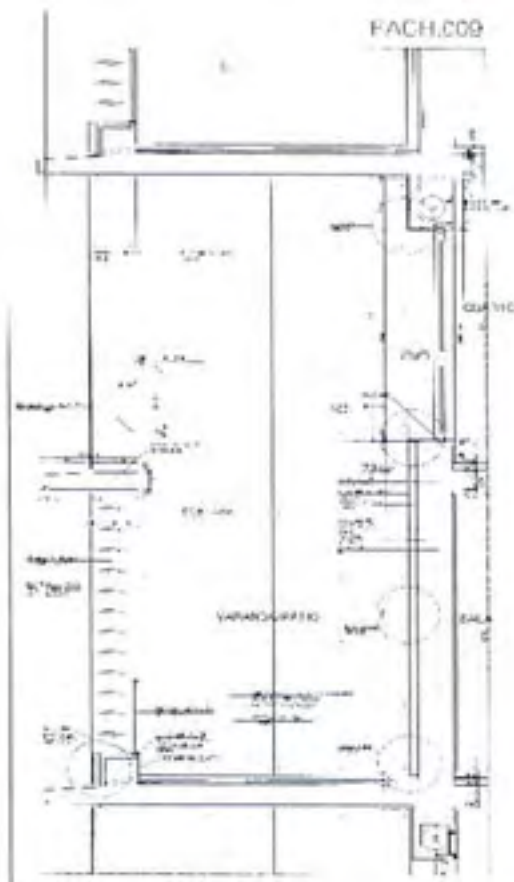
Broadacre vertical, Levittown em altura ou degenerescência do immeuble-villa - reconfigurações de um modelo hiper-democrático de gestão colectiva do projecto inflectido no sistemático exercício de vontades individuais. Absorvido na mancha saturada e indistinta de um inventário suburbano, o conjunto renuncia a distinções formais específicas que não advenham da insólita banalidade imanente do cumprimento do complexo tecno-funcional.

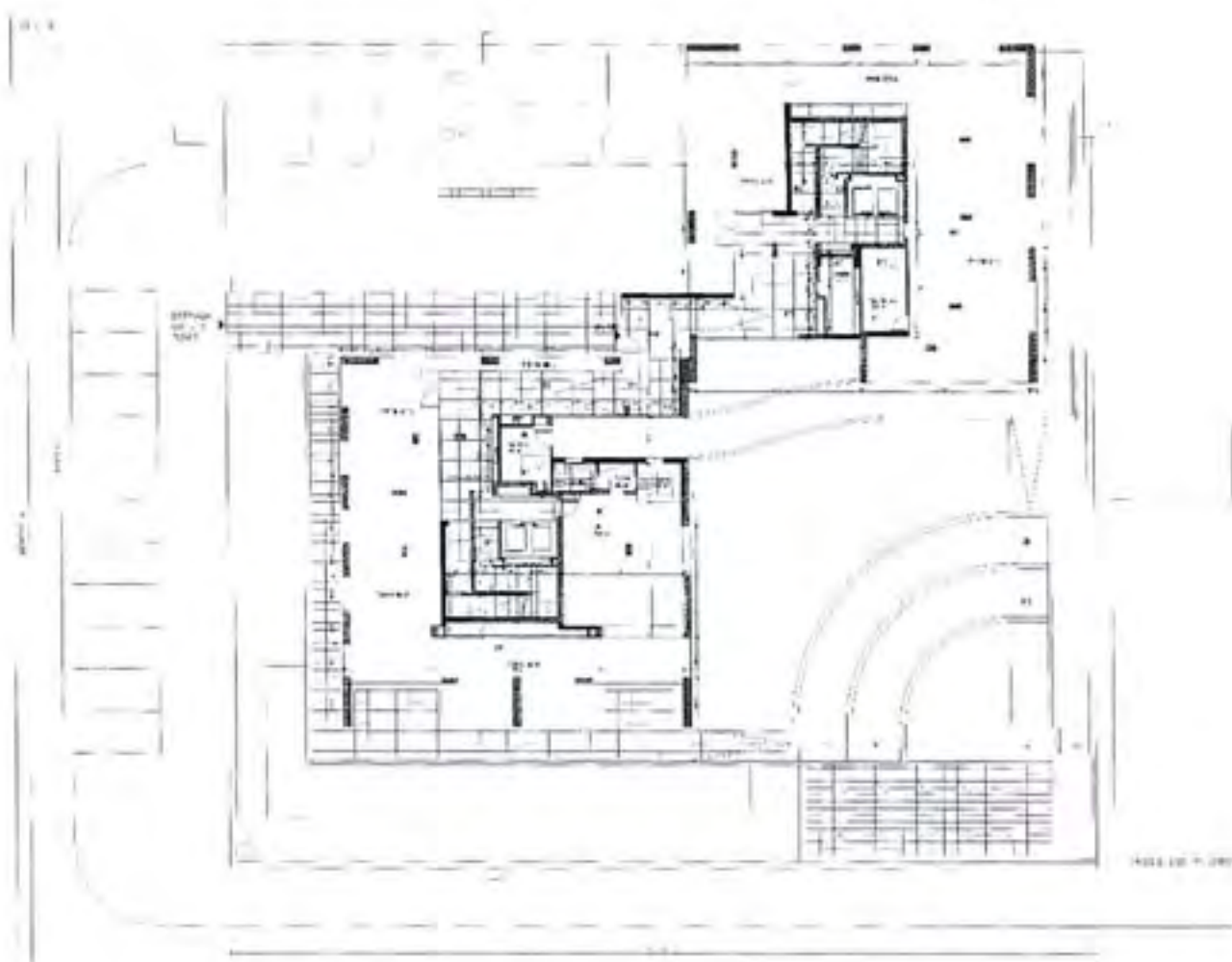
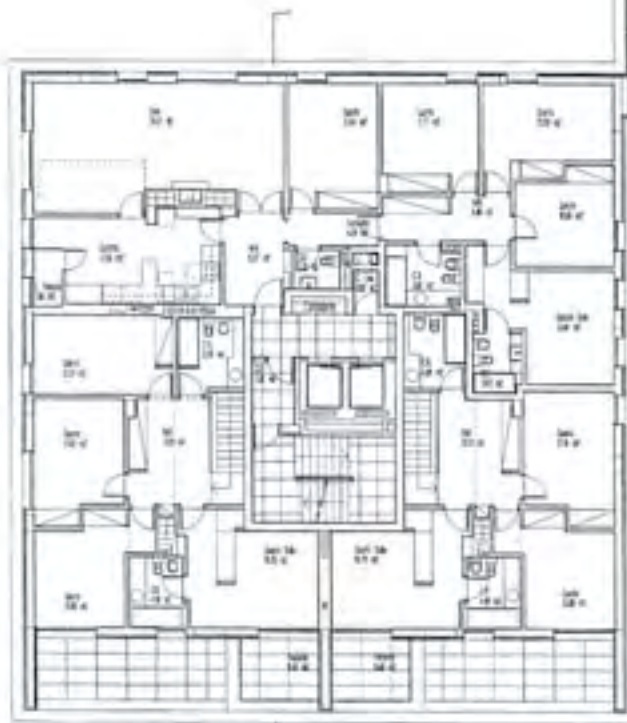
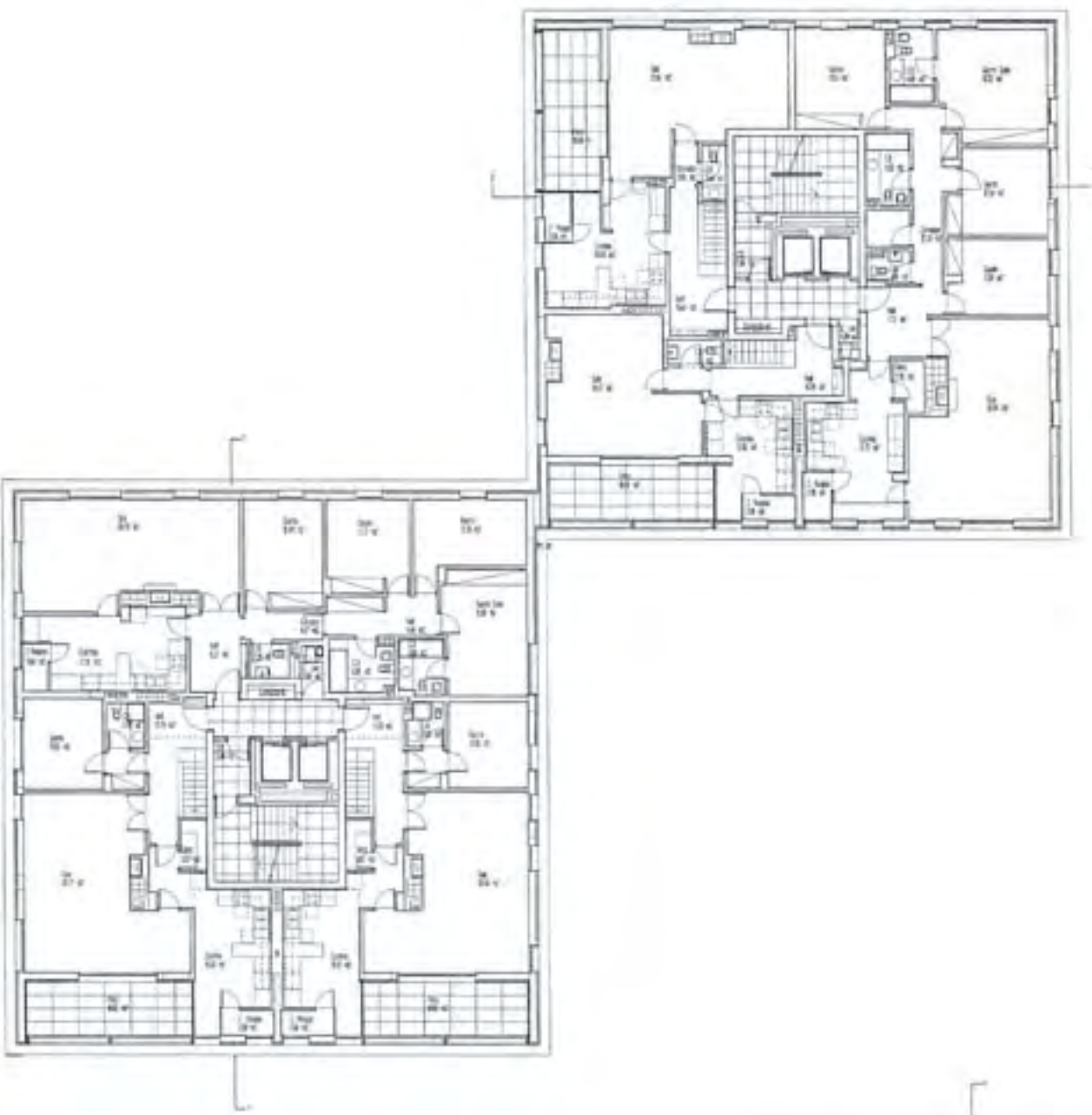
Coociclo Apartment Buildings, Telheiras, Lisbon, 1994 - 97

Two apartment blocks designed as the outcome of the first prize in a shortlist competition promoted by an independent housing co-operative for a pre-defined suburban plot. Following the request of co-op members, each building comprises eight different typologies, including single and double floor apartments. Initially configured around duplex dwellings with terraced patios, the façade is complicated by the addition of a hybrid system of dispersed single windows; the functional requirements of each floor are subjected to this superficially aleatory appearance. With 13 floors and 48 apartments, the diversity of compositional elements in the elevations is restrained by the strong coarse representation of the floor slabs while the rigorous monotony of materials - light grey fiber cement cladding, exposed concrete and aluminium - imparts a decisive contrast against the colourful richness of the surroundings.

In the last analysis the buildings contain the expectations of the nostalgic and bourgeois paradigm of the urban single-family house, irreconcilable with the metropolitan culture of congestion. A vertical Broadacre, a stacked Levittown or a degenerative immeuble-villa - reconfigurations of a hyper-democratic model of collective design management systematically inflected to accommodate the will of the individual. Immersed in the saturated inventory of a later-day suburban sprawl, the ensemble is the consequence of strict compliance with the techno-functional complex, reflecting banality of the cityscape.











Ficha Técnica

Technical Specifications

Projecto

Project: Edifícios de Habitação Cooiciclo
Cooiciclo Apartment Buildings

Arquitecto

Architect: Ignacio García Pedrosa, Madrid 1957, E.T.S.A. M. 1983
Angela García de Paredes, Madrid 1958, E.T.A.M. 1982

Agrimensor

Quantity surveyor: Joaquín Riveiro Pita

Equipa de Design

Design team: Manuel García de Paredes

Consultores

Consultants: GEASYT (engenharia mecânica)
GOGAITE (estrutura)

Fotografias

Photos: Eduardo Sánchez, Angel Baltanás

Cliente

Client: Comunidade Autónoma de Madrid

Área

Floor area: 527 sq.m

Premiado em

First prize in competition: 1993

Projecto

Project: 1995.

Obra

Construction 1998